

Environment-Friendly Corporation

ILSEUNG

Always Thinking
Environment-Friendly Innovation



 **ILSEUNG**
www.ilseung.co.kr



It is started in

1988

Jul.
Founded

Developed and manufactured and Filter type Fuel and Lubricating oil purifier

Jun.
Developed and manufactured Biological type Sewage Treatment Plant in compliance with IMO rule

Feb.
Developed ISS-N Series

May.
Sewage Treatment plant achieved MED CERT' according to MEPC.159 (55)

Jan.
Achieved MED CERTIFICATE According to IMO MEPC. 227(64) for the New Sewage Treatment Plant

1992

1999

2001

2008

2011

2015

2019

Jul.
Developed and manufactured Evaporating type Fresh Water Generator

Jan.
Achieved The Certificate of Utility Model Registration for Sewage Treatment Plant from The Korean government.

Sept.
Certified ISO9001 by Korean Register of Shipping

Dec.
Sewage Treatment plant achieved MED CERT'

Nov.
Awarded as a World Class Product

Apr.
Completed the construction of New Factory in the Busan Area

Developed new type fresh water generator (ISF-C, ISF-M)

CEO Message

IL SEUNG is a company that specializes in the production of Sewage Treatment Plant, Fresh Water Generator and Oil Purifier based on accumulated experience and technical adaptness.

With our world-class technologies, IL SEUNG is producing and providing high-qualified Sewage Treatment Plant, Fresh Water Generator and Oil Purifier to our customers.

As one of leading company for environmental equipment, IL SEUNG will stably secure necessary supply and promote research and development for marine equipment. We commit to continue to press forward to become a company specializing in advanced materials.

In response to the rapidly changing regulatory environment, IL SEUNG, with its creative and challenging spirit, will always become the WORLD'S BEST enterprise with leading competitiveness and quality. We will achieve this by consistently focusing on research, development and quality management. Also, we commit to fulfill our social responsibilities by implementing a mutually beneficial management system and contributing to making a prosperous society.

We look forward to your continued concern and support.

CERTIFICATE



ISO 9001



ISO 14001

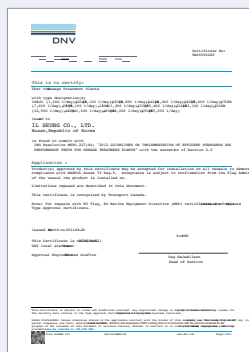


ISO 45001

SEWAGE TREATMENT PLANT ISB Series



MED CERTIFICATE



DNV CERTIFICATE



RS CERTIFICATE



CR CERTIFICATE



KG CERTIFICATE

SEWAGE TREATMENT PLANT ISB Series

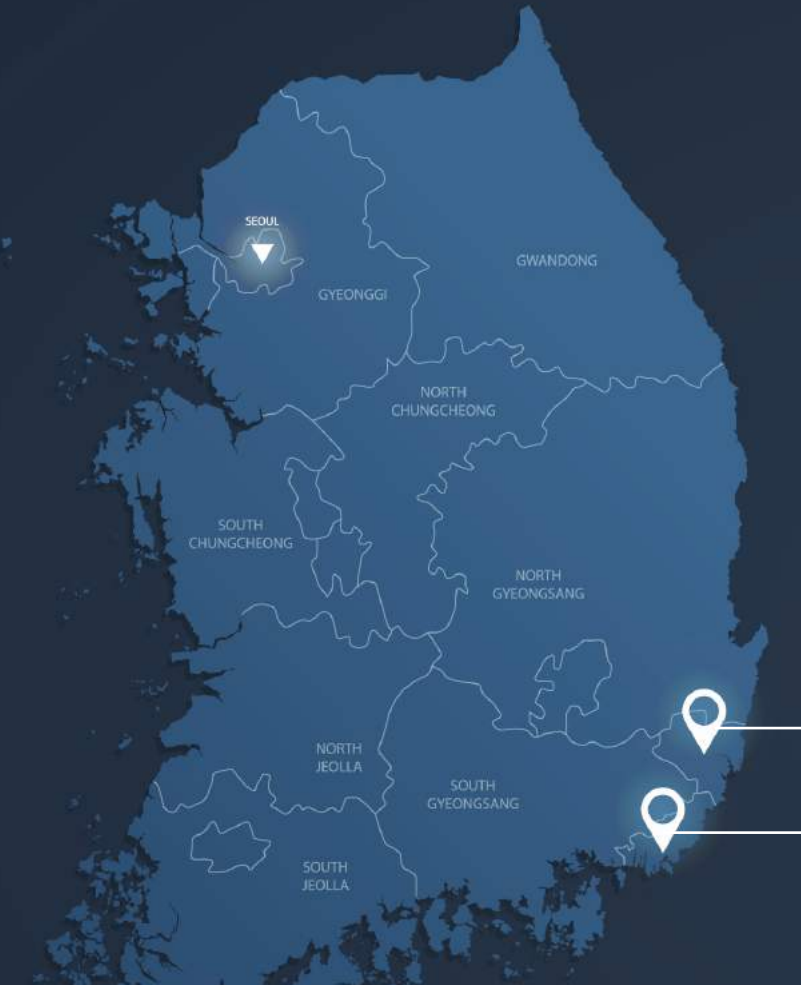


◀ Patent



◀ World class product

Company Location



▼ Ulsan Haknam Factory



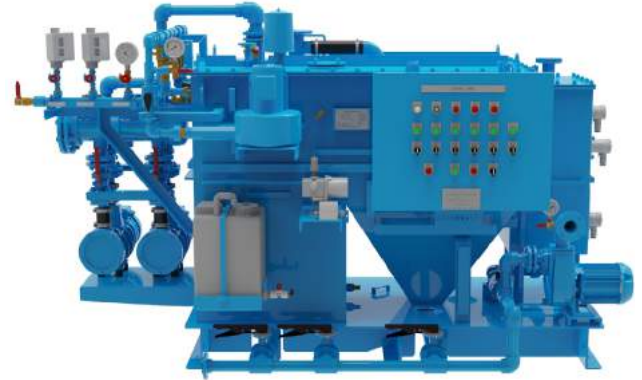
▼ Busan Factory (Head Office)



>> Sewage treatment plant ISB Series

Sewage treatment plant ISB series is developed through our own built up technology by using MBBR (Moving Bed Bio Film Reactor)

- Mandatory installation for vessels which a gross tonnage of 400 tons or more and exceeding 15 persons on board according to MARPOL 73/78
- The way in which the waste water is oxidized and decomposed by microorganisms (bacteria) attached to moving media (MBBR)
- With the use of moving media (MBBR), the microbial contact surface area is large, allowing the equipment to be compactly optimized
- Microorganisms easily adapt to large load, because of wide contact area of waste water
- Low maintenance cost and easy maintenance



MODEL	CAPACITY (L/Day)	PERSON	ORGANIC LOAD (kg/Day)	SIZE (mm)			WEIGHT (kg)
				L	W	H	
ISB-01	1,260	18	0.63	1,862	1,173	1,519	880
ISB-02	2,100	30	1.05	2,192	1,313	1,584	1,050
ISB-03	2,800	40	1.40	2,410	1,599	1,717	1,380
ISB-04	4,200	60	2.10	2,570	1,629	1,817	1,520
ISB-06	5,600	80	2.80	2,716	1,909	1,992	1,800
ISB-07	7,000	100	3.50	2,936	2,029	1,992	2,020
ISB-09	9,100	130	4.55	3,176	1,999	2,067	2,360
ISB-11	11,200	160	5.60	3,276	2,119	2,217	3,000
ISB-15	15,400	220	7.70	4,310	2,690	2,216	4,200
ISB-23	23,100	330	11.55	4,720	2,980	2,616	5,370
ISB-33	32,900	470	16.45	5,340	3,190	2,787	6,760
ISB-41	41,000	586	20.50	5,710	3,660	2,937	7,680
ISB-48	48,000	686	24.00	5,810	3,660	3,137	8,750
ISB-65	65,000	928	32.50	6,630	4,030	3,137	9,620

>> Grease trap

Equipment to separate grease from galley waste water on the vessel



- Separation using specific gravity difference between water and oil
- Install to prevent fat from sticking to the inner wall of the drain pipe and clogging it
- Easy to maintain and repair with simple structure

Model	Dimension(mm)			Weight(kg)
	L	W	H	
ISG-20	880	465	523	60

- Internal: SUS304 /
- External: 1ST Intergard 361µm (With cover)
2ND MUNSELL NO. 7.5BG 7/2, 500µm (With Cover)

>> Sewage treatment plant ISS Series



Sewage treatment plant ISS series treats waste water with a large amount of fixed contact media.

- The way in which the waste water is oxidized and decomposed by microorganisms (bacteria) attached to fixed contact media
- Adoption of Feed-back system of solid matter and activated carbon
- Sludge production is low due to the long solids retention time
- Each tank can be divided and replaced
- Low maintenance cost and easy maintenance (Activated Carbon provides much lower maintenance cost than Membrane type.)

MODEL	CAPACITY (L/Day)	PERSON	ORGANIC LOAD (kg/Day)	SIZE (mm)			WEIGHT (kg)
				L	W	H	
ISS-15N	1,050	15	0.525	1,680	1,622	2,018	1,314
ISS-25N	1,750	25	0.875	1,852	1,735	2,018	1,384
ISS-35N	2,450	35	1.225	2,130	1,851	2,018	1,537
ISS-43N	3,010	43	1.505	2,230	1,905	2,018	1,650
ISS-60N	4,200	60	2.100	2,690	2,105	2,018	1,819
ISS-85N	5,950	85	2.975	3,060	2,343	2,018	2,198
ISS-100N	7,000	100	3.500	3,295	2,250	2,018	2,696
ISS-130N	9,100	130	4.550	3,750	2,723	2,018	2,977
ISS-160N	11,200	160	5.600	4,080	2,923	2,018	3,291
ISS-232N	16,240	232	8.120	2,476	4,595	3,570	7,087

>> Sewage holding tank ISH Series

Sewage holding tank ISH series can hold large amount of sewage at high quality level.

- Scope of supply
- Tank body
- Pipe accessories
- Transfer pump
- Level gauge / Switch
- Control panel for holding tank (optional)

MODEL	CAPAITY (m ³ /DAY)	TANK VOLUME (m ³)	MODEL	CAPAITY (m ³ /DAY)	TANK VOLUME (m ³)
ISH-01	1.0	1.2	ISH-11	11.0	12.9
ISH-02	2.0	2.4	ISH-12	12.0	14.1
ISH-03	3.0	3.5	ISH-13	13.0	15.3
ISH-04	4.0	4.7	ISH-14	14.0	16.5
ISH-05	5.0	5.9	ISH-15	15.0	17.6
ISH-06	6.0	7.1	ISH-16	16.0	18.8
ISH-07	7.0	8.2	ISH-17	17.0	20.0
ISH-08	8.0	9.4	ISH-18	18.0	21.2
ISH-09	9.0	10.6	ISH-19	19.0	22.4
ISH-10	10.0	11.8	ISH-20	20.0	23.5



>> Fresh water generator ISF-C Series

A device for producing fresh water by evaporating and condensing sea water using engine jacket water under vacuum

- **Structure:** Consists of a condenser tube in the main body and the upper part of the main body, and a heater tube in the lower part
- **Material of body** is made of SUS316L to prevent corrosion
- **Manufactured water** is pure distilled water with a salinity of less 10PPM and can be used for all kinds of ship water such as engine cooling water, drinking water, kitchen water

Model	TON (m ³ /DAY)	Dimension(mm)			Weight (kg)
		L	W	H	
ISF-10C	10	1,787	1,203	1,811	1,235
ISF-15C	15	2,080	1,203	2,032	1,235
ISF-20C	20	2,246	1,498	2,245	1,485
ISF-25C	25	2,416	1,528	2,415	1,595
ISF-30C	30	2,220	1,624	2,250	1,705
ISF-35C	35	2,367	1,668	2,246	1,800



>> Fresh water generator ISF-M Series

A device for producing fresh water by evaporating and condensing sea water using engine jacket water under vacuum (Compact type)

- **Structure:** Consists of a condenser tube in the main body and the upper part of the main body, and a heater tube in the lower part
- **Material of body** is made of SUS316L to prevent corrosion
- **Manufactured water** is pure distilled water with a salinity of less 10PPM and can be used for all kinds of ship water such as engine cooling water, drinking water, kitchen water



Model	TON (m ³ /DAY)	Dimension(mm)			Weight (kg)
		L	W	H	
ISF-01M	1	718	373	877	90
ISF-03M	3	1,191	580	1,080	270
ISF-05M	5	1,341	630	1,150	300
ISF-10M	10	1,418	1138	1,114	470
ISF-15M	15	1,512	808	1,237	500

>> Fresh water generator **ISF-P Series**

A device for producing fresh water by evaporating and condensing seawater using engine jacket water under vacuum

- Structure: Consists of several titanium plates in the body
- Based on two titanium plate heat exchangers applied with evaporator and condenser
- Good efficiency due to heat exchanges between titanium plates

MODEL	CAPACITY (L/HR)	SIZE (mm)			WEIGHT (kg)
		L	W	H	
ISF-10P	10	1,882	1,675	1,674	1,110
ISF-15P	15	1,882	1,675	1,674	1,160
ISF-20P	20	1,882	1,675	1,674	1,210
ISF-25P	25	1,882	1,675	1,674	1,260
ISF-30P	30	2,240	1,920	2,144	1,630
ISF-35P	35	2,240	1,920	2,144	1,710
ISF-40P	40	2,240	2,050	2,144	1,800
ISF-45P	45	2,240	2,300	2,144	1,930
ISF-50P	50	2,240	2,430	2,144	2,060
ISF-60P	60	2,240	2,560	2,144	2,190



>> Oil purifier **ISP Series**

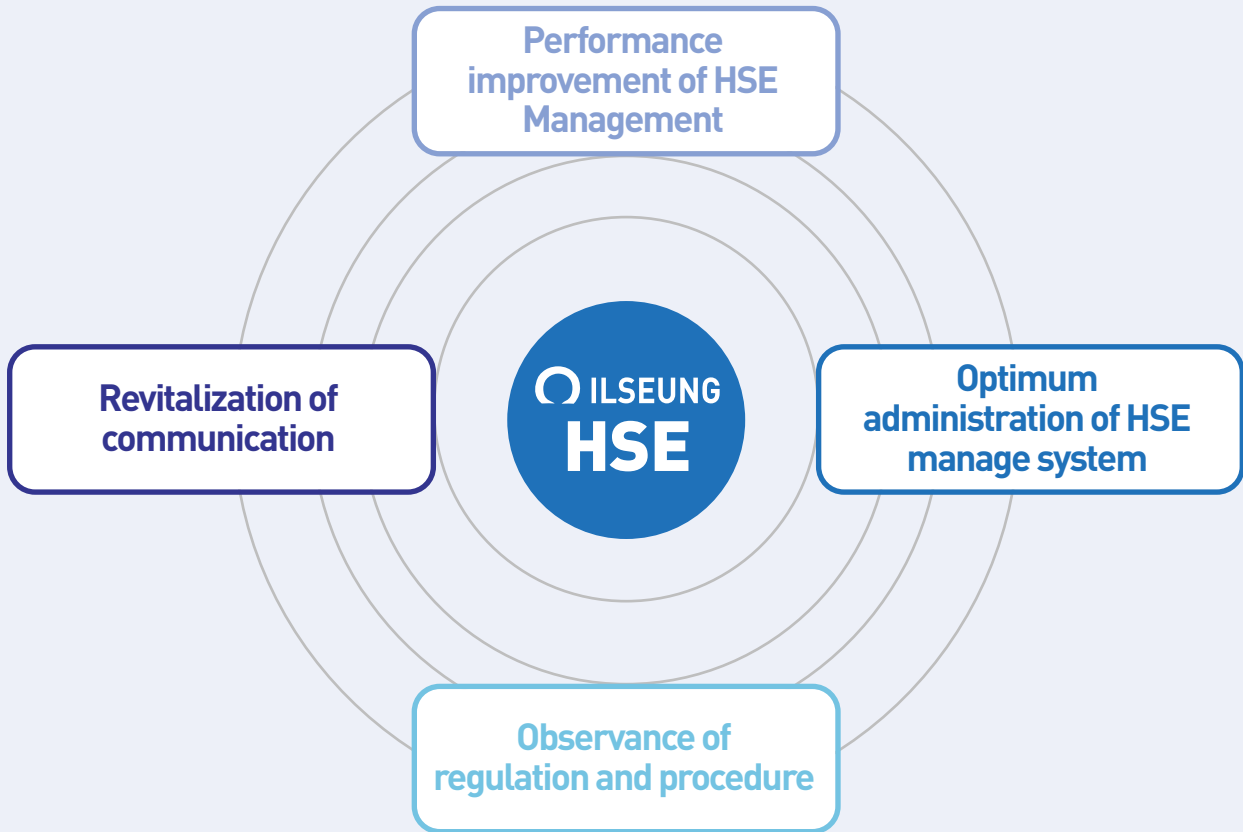
Equipment to remove impurities and moisture contained in marine diesel oil used in diesel engines



- Separate filter for eliminating impurities and separating filter makes perfect impurity removal and moisture separation
- Automatic discharge of water separated from the fuel oil by operation of the moisture sensor
- No need for expertise due to easy operation
- Easy to maintain and repair with simple filter cleaning, and filter can be used for semi-permanent use by repeated washing
- Minimal failure rate because the mechanical working part is MOTOR & PUMP only

MODEL	CAPACITY (L/HR)	SIZE (mm)			WEIGHT (kg)
		L	W	H	
ISP-600	600	734	505	1,046	150
ISP-1200	1,200	864	580	1,046	230
ISP-1800	1,800	954	675	1,146	280
ISP-2400	2,400	994	675	1,146	310
ISP-3600	3,600	1,074	713	1,446	330
ISP-4800	4,800	1,074	713	1,446	350

All employee and executives of ILSEUNG recognize that management of safety, health and environment is a core factor of all management activities to become **“Top Excellent Company in the world”**. Thus, we establish and implement the following policies for **No accident, No disease and No pollution**.



Vision of ILSEUNG | Always Thinking **Environment-Friendly** Innovation

<p>Global Market Extension</p>	<p>Activation of business model</p>
<ul style="list-style-type: none"> • Strengthen Global Marketing • Construct Global Infrastructure 	<ul style="list-style-type: none"> • Differentiate Core Services • Development of niche market
<p>Happy working Environment</p>	
<ul style="list-style-type: none"> • Work & Life Balance • Strengthen Job Competency Improvement • Extend Corporate Philanthropy 	

IL SEUNG Sale & Service Network



**We are all connected to each other
for your satisfaction!**

Always Thinking
Environment-Friendly
Innovation



ILSEUNG Co.,Ltd.

#31, Noksansandan 165-ro 14beon-gil, Gangseo-gu, Busan, 46752, Korea
TEL +82-51-831-4110 FAX +82-51-831-4112